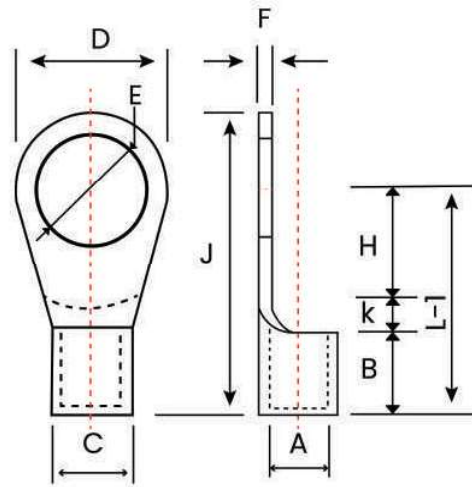




COPPER RING TERMINALS





COPPER RING TERMINALS

SL. NO.	AREA mm ²	DIMENSION										CAT NO.
		E	A	C	D	F	B	K	H	L-1	J	
1	1.5	3.2	1.6	3.2	6.0	0.8	5	2	4.0	11	14.0	DPRS-7001
		3.7	1.6	3.2	6.8	0.8	5	1	3.6	9.6	13.0	DPRS-7048
		3.7	1.6	3.2	6.0	0.8	5	2	4.0	11	14.0	DPRS-7002
		4.2	1.6	3.2	6.8	0.8	5	1	3.6	9.6	13.0	DPRS-7049
		4.2	1.6	3.2	6.0	0.8	5	2	4.0	11	14.0	DPRS-7003
		4.2	1.6	3.2	7.0	0.8	5	1	5.0	11	14.5	DPRS-7154
		4.2	1.6	3.2	8.0	0.8	5	2	5.0	12.0	16.0	DPRS-7004
		5.2	1.6	3.2	8.0	0.8	5	2	5.0	12.0	16.0	DPRS-7005
		5.2	1.6	3.2	10.0	0.8	5	2	6.0	13.0	18.0	DPRS-7006
		6.4	1.6	3.2	10.0	0.8	5	2	6.0	13.0	18.0	DPRS-7007
		6.4	1.6	3.2	12.0	0.8	5	1	6.0	12.0	18.0	DPRS-7106
2	2.5	3.2	2.3	3.9	6.5	0.8	5	1	3.5	9.5	12.7	DPRS-7107
		3.7	2.3	3.9	6.5	0.8	5	1	3.5	9.5	12.7	DPRS-7008
		3.7	2.3	3.9	8.0	0.8	5	2	5.0	12.0	16.0	DPRS-7108
		4.2	2.3	3.9	8.0	0.8	5	2	5.0	12.0	16.0	DPRS-7009
		5.2	2.3	3.9	8.0	0.8	5	2	5.0	12.0	16.0	DPRS-7010
		5.2	2.3	3.9	10.0	0.8	5	1	7.0	13.0	18.0	DPRS-7109
		5.2	2.3	3.9	12.0	0.8	5	2	9.0	16.0	22.0	DPRS-7110
		6.4	2.3	3.9	10.0	0.8	5	1	7.0	13.0	18.0	DPRS-7011
		6.4	2.3	3.9	12.0	0.8	5	2	9.0	16.0	22.0	DPRS-7012
		8.2	2.3	3.9	12.0	0.8	5	2	9.0	16.0	22.0	DPRS-7013
		8.2	2.3	3.9	16.0	0.8	5	2	10.0	17.0	25.0	DPRS-7014
		10.2	2.3	3.9	18.0	0.8	5	1	14.0	20.0	29.0	DPRS-7151
10.2	2.3	3.9	16	0.8	5	2	10.0	17.0	25.0	DPRS-7015		
3	4.6	4.2	3.5	5.5	8.0	1	6	2	5.0	13.0	17.0	DPRS-7155
		5.2	3.5	5.5	8.0	1	6	2	5.0	13.0	17.0	DPRS-7050
		5.2	3.5	5.5	10.0	1	6	3	5.0	14.0	19.0	DPRS-7016
		6.4	3.5	5.5	12	1	6	2	6	14	20	DPRS-7017
		6.4	3.5	5.5	12	1	6	3	7	16	22	DPRS-7019
		6.4	3.5	5.5	14	1	6	2	10.5	18.5	25.5	DPRS-7115
		8.2	3.5	5.5	12	1	6	2	6	14	20	DPRS-7018
		8.2	3.5	5.5	14	1	6	2	10.5	18.5	25.5	DPRS-7020
		8.2	3.5	5.5	16	1	6	3	13	22	30	DPRS-7116
		10.2	3.5	5.5	18	1	6	3	12	21	30	DPRS-7023
		10.2	3.5	5.5	16	1	6	3	13.0	22.0	30	DPRS-7022
4	10	5.2	4.3	6.3	10	1	8	2	7	17	22	DPRS-7025
		5.2	4.3	6.3	10	1	8	3	4	15	20	DPRS-7026



COPPER RING TERMINALS

SL. NO.	AREA mm ²	DIMENSION										CAT NO
		E	A	C	D	F	B	K	H	L-1	J	
4	10	6.4	4.3	6.3	12	1	8	2	7	17	23	DPRS-7120
		8.2	4.3	6.3	16	1	8	4	7	19	27	DPRS-7121
		10.2	4.3	6.3	22	1	8	5	10	23	34	DPRS-7123
		10.2	4.3	6.3	18	1	8	4	9.0	21.0	30.0	DPRS-7027
		12.7	4.3	6.3	22	1	8	5	10	23	34	DPRS-7028
5	16	5.2	5.6	8.0	10	1.2	10	3	6	19	24	DPRS-7124
		6.4	5.6	8.0	12	1.2	10	4	6	20	26	DPRS-7029
		8.2	5.6	8.0	16	1.2	10	4	8	22	30	DPRS-7030
		9.7	5.6	8.0	16	1.2	10	4	8	22	30	DPRS-7031
		10.2	5.6	8.0	22	1.2	10	6	8	24	35	DPRS-7128
		10.2	5.6	8.0	18	1.2	10	4	10	24	33	DPRS-7032
6	25	12.7	5.6	8.0	22	1.2	10	6	8	24	35	DPRS-7033
		6.4	7.5	11.1	12	1.8	11	4	10	25	31	DPRS-7156
		8.2	7.5	11.1	16	1.8	11	5	6	22	30	DPRS-7034
		8.2	7.5	11.1	16	1.8	11	4	10	25	33	DPRS-7036
		10.2	7.5	11.1	16	1.8	11	5	6	22	30	DPRS-7035
		10.2	7.5	11.1	22	1.8	11	6	14	31	42	DPRS-7132
7	35	12.7	7.5	11.1	22	1.8	11	6	14	31	42	DPRS-7037
		6.4	9.0	12.6	16	1.8	12	5	6	23	31	DPRS-7133
		8.2	9.0	12.6	16	1.8	12	5	6	23	31	DPRS-7038
		10.2	9.0	12.6	22	1.8	12	4	15	31	42	DPRS-7135
8	50	12.7	9.0	12.6	22	1.8	12	4	15	31	42	DPRS-7040
		8.2	10.5	14.1	18	1.8	16	6	12	34	43	DPRS-7136
		10.2	10.5	14.1	22	1.8	16	7	9	32	43	DPRS-7137
		12.7	10.5	14.1	24	1.8	16	6	14	36	48	DPRS-7042
9	70	16.2	10.5	14.1	32	1.8	16	7	15	38	54	DPRS-7139
		10.2	12.0	16.0	22	2	18	7	11	36	47	DPRS-7140
		12.7	12.0	16.0	24	2	18	8	10	36	48	DPRS-7141
10	95	16.2	12.0	16.0	28	2	18	6	16	40	54	DPRS-7142
		10.2	13.5	18.1	24	2.3	20	6	12	38	50	DPRS-7144
		12.7	13.5	18.1	24	2.3	20	6	12	38	50	DPRS-7044
11	120	16.2	13.5	18.1	28	2.3	20	7	17	44	58	DPRS-7145
		12.7	15.0	20.2	26	2.6	22	10	7	39	52	DPRS-7146
		16.2	15.0	20.2	32	2.6	22	7	19	48	64	DPRS-7147
12	150	20.3	15.0	20.2	40	2.6	22	10	20	52	72	DPRS-7148
		12.7	16.5	23.7	34	3.6	24	9	16	49	66	DPRS-7149
		16.2	16.5	23.7	34	3.6	24	9	16	49	66	DPRS-7045
		20.3	16.5	23.7	40	3.6	24	10	20	54	74	DPRS-7046